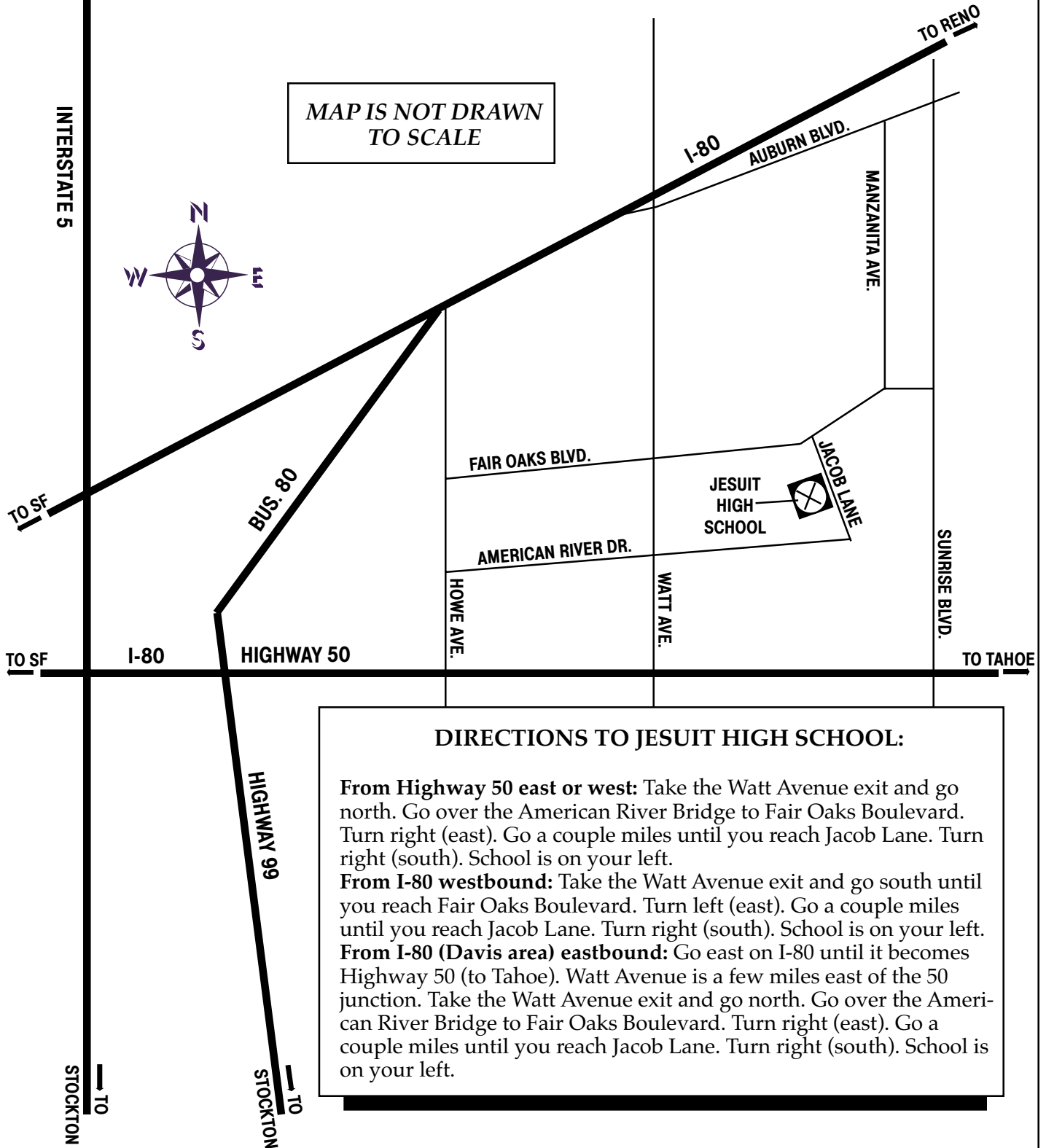


JESUIT HIGH SCHOOL

1200 Jacob Lane
Sacramento

MAP IS NOT DRAWN
TO SCALE



DIRECTIONS TO JESUIT HIGH SCHOOL:

From Highway 50 east or west: Take the Watt Avenue exit and go north. Go over the American River Bridge to Fair Oaks Boulevard. Turn right (east). Go a couple miles until you reach Jacob Lane. Turn right (south). School is on your left.

From I-80 westbound: Take the Watt Avenue exit and go south until you reach Fair Oaks Boulevard. Turn left (east). Go a couple miles until you reach Jacob Lane. Turn right (south). School is on your left.

From I-80 (Davis area) eastbound: Go east on I-80 until it becomes Highway 50 (to Tahoe). Watt Avenue is a few miles east of the 50 junction. Take the Watt Avenue exit and go north. Go over the American River Bridge to Fair Oaks Boulevard. Turn right (east). Go a couple miles until you reach Jacob Lane. Turn right (south). School is on your left.